



Topic: What does my home look like?

KS1 – Year 1

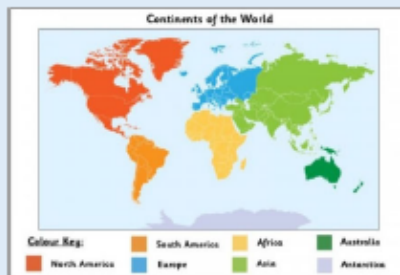
What should I already know?

- children know about similarities and differences in relation to place
- They talk about the features of their own immediate environment and how environments might vary from one another.

New Learning

- Name and locate the seven continents and five oceans
- Identify seasonal and daily weather patterns in the UK, and the location of hot and cold areas of the world in relation to the Equator and North and South Poles
- Use world maps and globes to identify the above
- Use aerial photos and plans to recognise landmarks and basic human/physical features

Can you use a basic Atlas?



What do you think the light blue is? Why are different parts of the map different colours?

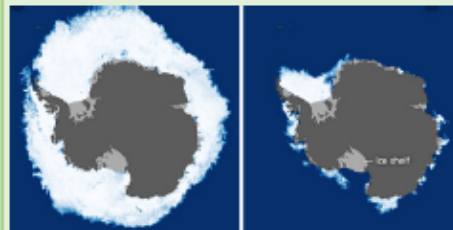
Use the key to find Africa!

What?

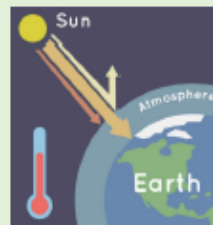
Compare England to a contrasting country (The Arctic & the Sahara Desert)



What happens to the Arctic during the summer and the winter months? Does anything look different due to the ice melting? What affect does this have on the animals?



Global warming is causing the polar ice caps to melt quicker. This will affect animals living in these countries.



Key Vocabulary	Definition
Equator	The imaginary line separating the northern and southern hemispheres.
North Pole	Northern hemisphere where the earths axis of rotation meets the surface
South Pole	Southern hemisphere where the earths axis of rotation meets the surface
Ocean	A large body of water which covers a large area of the earth
Continents	A large area of land on earth that is joined together. There are 7 continents Africa, Antarctica, Asia, Europe, North America, Australia and South Africa.

Inspirational Figures	Role
David Attenborough	Studied natural science Director of animal programmes.
Liz Tomas	Palaeoclimatologist at the British Antarctic survey